

Route 84 Niles Canyon Stakeholder Meeting
Detailed Agenda
Wednesday, February 27, 2013

1. Public comments regarding RSA/VA (Main issues):
 - a. Tree removal (R-15)
 - b. Traffic calming and speed management
 - c. Bicycle-Pedestrian safety
 - d. Fish passage
 - e. Mitigation
 - f. Other topics

2. Next step proposals:
 - a. Short term countermeasures - 5 day labor contracts

 - b. Rosewarnes UP, Farwell UP, and R-5 Steel mesh netting on slope

 - c. Safety Improvement project that includes remaining short term and medium term countermeasures (except Alameda Creek Bridge)
 - Remaining short term improvements (R-15 tree removal)
 - Low speed curve east of Spot
 - Alameda Creek Bridge and Overhead (BOH)
 - Limited pavement widening for corridor enforcement
 - Route 84/Pleasanton-Sunol Road Intersection improvements

 - d. Alameda Creek Bridge Replacement

 - e. Traffic Monitoring period

3. Future Stakeholder meetings:
 - a. Presentation on Alameda Creek Bridge Replacement project.
 - b. Present preliminary designs to stakeholders for comment prior to release of draft environmental document.

SHORT-TERM COUNTERMEASURES

These countermeasures are shorter term measures that improve safety with less environmental impact, addressing features such as: improved positive guidance, removing/ protecting roadside hazards, better identification of roadside hazards, minor intersection improvements, and upgrading roadway appurtenances.

The following short-term countermeasures are identified below.

1. AN-2 Install active warning system to alert motorists to bikes on roadway
2. AN-5 **Install sharrows on shoulders or lane edges at select locations to demonstrate potential bicycle usage**
3. C-1 Install friction treatment to pavements at low-speed curve locations
4. IO-8 ~~Install mirror on the Farwell Underpass pier to alert vehicles at the Palomares Road Intersection~~
5. IO-9 Modify flashing beacon at Palomares Road to indicate intersection is further to the east
6. IO-11 Install ITS elements at Palomares Road to signal drivers of approaching vehicles
7. IO-17 Lighting of key areas (Rosewanes Underpass, Palomares Road Intersection/Farwell Underpass)
8. P-1 **Eliminate passing zone adjacent to low-speed curves**
9. R-5 Install steel mesh netting on slopes in rockfall areas
10. R-12/R-14 Upgrade roadside protection appurtenances and address guard rail and K-rail end treatments
11. R-15 Relocate select fixed objects immediately adjacent to roadway
12. SIMA-1 **Install reflective material on underpass abutments**
13. SIMA-2 **Install reflective material on curbs and rock walls adjacent to roadway**
14. SIMA-3 Install dynamic active warning device for queuing conditions
15. SPMA-2/3 Install speed feedback sign and transverse pavement markings at low-speed curves
16. **Reduce sign clutter at Old Canyon Road and Palomares Road**

MEDIUM-TERM COUNTERMEASURES

The following 12 countermeasures improve safety at those locations identified by the ERS analysis. The medium-term countermeasures in conjunction with the short-term countermeasures address the project safety needs. These improvements generally result in more significant impacts associated with roadway geometry or typical section modifications that lead to greater environmental impacts than those identified in the short-term countermeasures. These impacts require greater project development time and effort.

The medium-term safety locations and countermeasures are identified below.

Rosewarnes Underpass Spot Improvements

- Countermeasure R-4 Relocate the west abutment at the Rosewarnes Underpass
- Countermeasure R-9 Bifurcate the roadway at Rosewarnes Underpass with new viaduct constructed to the south
- Countermeasure RO-1 Realign Road and Construct Tunnel into Slope at the Rosewarnes Underpass

Palomares Road/Farwell Underpass Spot Improvements

- Countermeasure IO-2 Realign Palomares Road to join church driveway
- Countermeasure IO-5 Relocate the railroad abutment at the Farwell Underpass to improve sight distance

Alameda Creek Bridge Spot Improvements

- Countermeasure ACB-2 Replace Alameda Creek Bridge to upgrade the approach curves

Low-Speed Curve Located Between Alameda Creek and Alameda Creek BOH Bridges Spot Improvement East of The Spot

- Countermeasure C-2 Correct superelevation at low-speed curve between the two project bridges
- Countermeasure C-3 Widen roadway curve east of Alameda Creek Bridge to accommodate off-tracking

Alameda Creek BOH Spot Improvements

- Countermeasure ALCRBO-1 Remove curb on Alameda Creek Bridge BOH

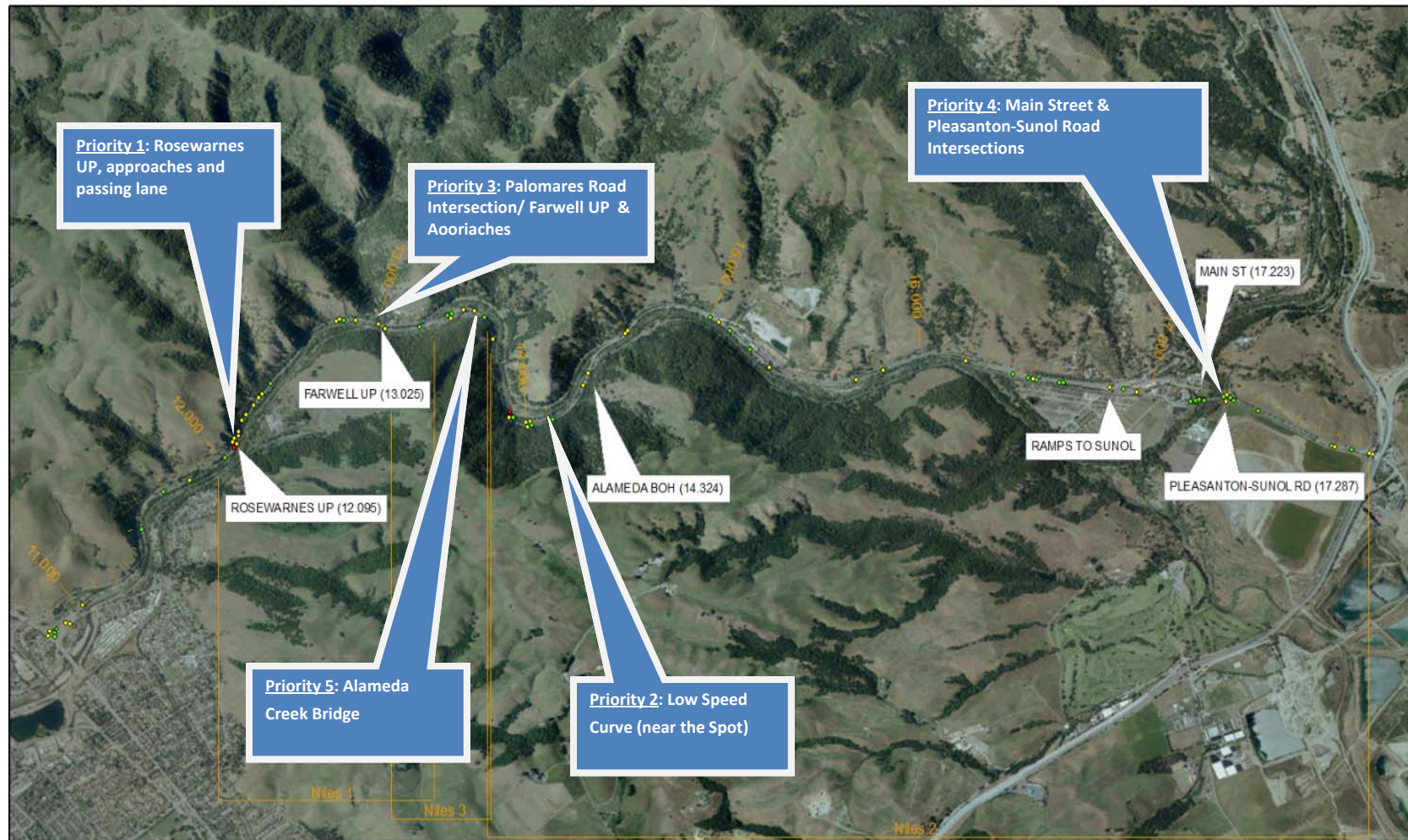
Pleasanton-Sunol Road/SR 84 Intersection

- Countermeasure IO-1 Construct a roundabout at the intersection of SR 84 and Pleasanton-Sunol Road
- Countermeasure IO-15 Construct a signalized intersection at the Pleasanton-Sunol Road Intersection

Facilitate Corridor Enforcement

- Countermeasures SPMA-4/SW-3 Provide widened locations at strategic spacing to accommodate enforcement and pullovers

Safety Need Priorities- Spot Locations*



*As indicated and supported on all **Lines of Evidence**

Route 84 Niles Canyon Stakeholders List	Contact
Senator Elenor Corbett's office	Alex Kobayashi
Senator Elenor Corbett's office	Mona Barra-Gibson
Senator Mark DeSaulnier's office *	Malcolm Brudigam
Assemblymember Bob Wieckowski's office	Rocky Fernandez
Assemblymember Bill Quirk's office *	Malia Vella
Assemblymember Bill Quirk's office	Layma Murtaza
Supervisor Richard Valle's office	Chris Miley
Supervisor Scott Haggerty's office	Dawn Argula
Alameda County Public Works	Art Carrera
Fremont - Public Works	Jim Pierson
Union City - Public Works	Mintze Cheng
Alameda County Water District	Evan Buckland
San Francisco Public Utilities Commission *	Tim Ramirez
San Francisco Public Utilities Commission *	Neal Fujita
East Bay Regional Parks District *	Chris Barton
East Bay Bicycle Coalition	Dave Campbell
Alameda Creek Alliance	Jeff Miller
Sunol Citizens Advisory Committee	Bob Frillman
Save Niles Canyon	Dorothy Bradley
Save Niles Canyon	Michelle Powell
Save Niles Canyon	Steve Wilson
Save our Sunol	Jim O'Laughlin
Save our Sunol	Irv Tiessen
Niles Canyon Railway *	Michael Strider
Local Ecology & Agriculture Fremont (LEAF) *	Bruce Cates
California Native Plant Society, East Bay Chapter *	Mack Casterman
Citizens Committee to Complete the Refuge *	Carin High
Friends of Coyote Hills Committee *	Ann Rice
Mission Peak Fly Anglers *	Larry Dennis
Save our Hills *	Elizabeth Ames
Sierra Club, Southern Alameda County Group *	Vinnie Bacon
Tri-City Ecology Center *	Donna Olsen

* Newly added stakeholders as of 1/7/13